

# Trail with a Tale



Royal Tunbridge Wells

Calling all schools and  
community groups

Be part of something incredible

## Learning programme

#TrailWithATale #RTWTrail

Presented  
to you by:



demelza

Creative  
partner:

*Catch A Fire*

Logistics  
partner:



Registered with  
FUNDRAISING  
REGULATOR

Registered Charity No. 1039651



# Introducing Trail with a Tale

Join us for an exciting trail through Tunbridge Wells while supporting Demelza, a local charity that provides outstanding clinical care to children with serious or life-limiting conditions and their families.

In summer 2025, Royal Tunbridge Wells will be transformed with vibrant sculptures. This Wild in Art event presented by Demelza, is a FREE, family-friendly trail open to all ages.

We would love your school or community group to get involved by decorating your own small sculpture! Each school/group will receive a resource pack filled with lesson plans, templates and activities, making it easy to integrate this creative project into the curriculum.

Get ready to inspire your students and be part of this spectacular community event! Please get in touch to hear more about this fantastic opportunity.

## Loren Regan

Learning Programme Lead  
[learning@trailwithatale.co.uk](mailto:learning@trailwithatale.co.uk)



#TrailWithATale #RTWTrail

# About Demelza

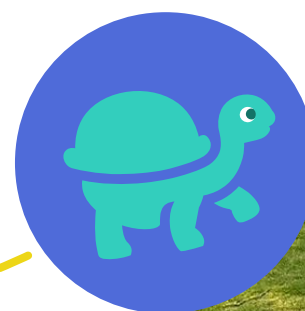
This is your chance to inspire creativity, imagination and nurture confidence in those involved!

Your decorated sculpture will be displayed in Tunbridge Wells during the Summer 2025! Once it's finished its journey across town it will return to you as a keepsake of the trail.

Demelza delivers extraordinary care to extraordinary children who are facing serious or life-limiting conditions in Tunbridge Wells and across Kent, East Sussex and South East London.

The trail will introduce Demelza to families who need our support, whether it be at one of our sites, at home, in the local community, or online. Our range of services include practical support, art and music therapy, sibling support and symptom management. Demelza also has amazing accessible facilities such as a hydro pool and sensory room.

Your involvement in the trail means we can raise awareness and vital funds, to continue providing support to children and families.





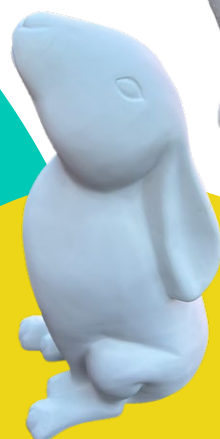
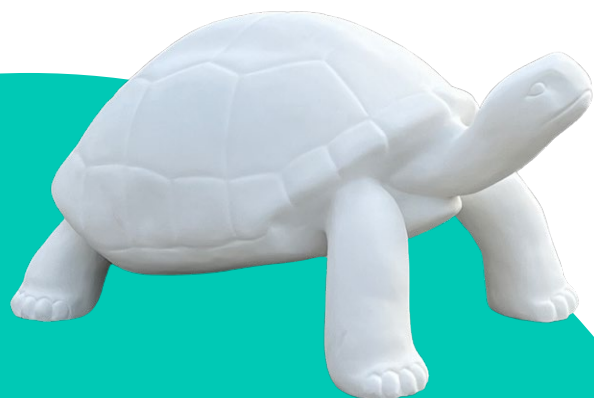
# Sculpture sponsorship

**£1000**

Your school can  
fundraise throughout the  
year to reach this target,  
or this can be funded by  
a PTA or local business.

- A small sculpture of your choice made from fire-resistant fibreglass. This will come to you primed and ready to paint!
- A dedicated member of our fundraising team to support your fundraising.
- A creative key-stage appropriate learning programme, including lesson plans, activities and teaching aids to encourage creative thinking.
- Templates for design ideas to encourage creativity across your school or community group.
- An invitation for two adults to attend our creative workshop to learn more about Trail with a Tale and gain artistic guidance on customising your hare/tortoise.
- A high-profile indoor location in Tunbridge Wells town centre to showcase your amazing creativity to local people and visitors.

## Which small sculpture will you choose?



# What you can look forward to

## From September 2024

### Join the fun!

Schools and community groups are invited to get involved with our Learning Programme to design and paint a small sculpture.

### Autumn 2024

#### Learning programme launch

Your learning programme will be sent to you, filled with lots of lesson plans, fundraising ideas and activities. During this time you will have support from our fundraising team.

### March-May 2025

#### Get painting!

Time to get creative! You will have three full months to decorate your sculpture, ready for it to be returned to Trail with a Tale HQ!

### July-September 2025

#### Trail live!

From July you will see your amazing sculpture positioned in a prominent location in Tunbridge Wells! Your school or group's unique creation will form part of the big sculpture trail. Once the event has finished your sculpture will be returned to you to be displayed in its forever home.

## Why Trail with a Tale?

Each sculpture will tell its own tale of individuality, creating uniqueness and joy to match the incredible artwork they display.

Families who have children with complex needs face different challenges every day, and Demelza is here to support them at every step of their unique journey.







# Why get involved?

There are so many benefits to getting involved with our trail, and we can't wait to work with you!

- Meet educational goals through a fun, accessible learning pack you can integrate into your creative curriculum across a number of subjects.
- Develop links in your local community and form strategic educational partnerships.
- Encourage the community to explore the trail and engage with the arts, cultural sites and green spaces across the town.
- Generate PR opportunities, demonstrating your active role in your community.



"The project allowed all the children and adults in our school to feel included and involved in an exciting large-scale public event. A once in a lifetime event for many and we will never forget it."

**Little Paxton Primary**



## Here we go!

Time to get creative and fundraise to keep your sculpture. A fundraiser will support you along the way, but here are some ideas to get started.



**Sponsored read-a-thon**

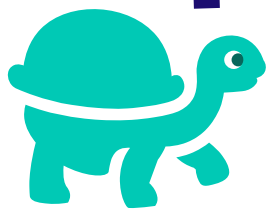
**Art challenge**  
Best sculpture creation

**Sports day challenge**

**Sponsored walk**



# Trail with a Tale



Royal Tunbridge Wells

## Thank you!

Ready to join  
in the fun? →



[www.trailwithatale.co.uk](http://www.trailwithatale.co.uk)

f @trailwithatale

#TrailWithATale #RTWTrail



**Loren Regan**

Learning Programme Lead

[learning@trailwithatale.co.uk](mailto:learning@trailwithatale.co.uk)

07719 070844

Presented  
to you by:



**demelza**

Creative  
partner:

*Catch A Fire*

Logistics  
partner:



Registered with  
**FUNDRAISING  
REGULATOR**

Registered Charity No. 1039651